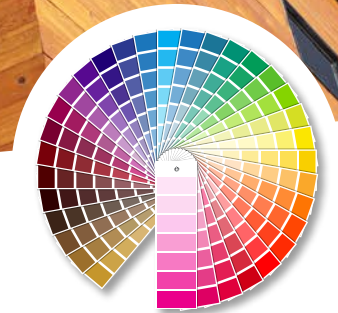




# BW MIX – COLORANTS FOR INDUSTRIAL APPLICATION



 **HELIOS TINTING**

BW colorants are specifically designed for tinting high performance waterborne industrial coatings. They are formulated with carefully selected raw materials in order to provide a wide range compatibility in different types of industrial coatings. BW colorants are suitable for primers, intermediates, topcoats and monolayers of different chemistries.

Rheological settled colorants are suitable for gravimetric and volumetric dispensing and ensure the accuracy and repeatability of a wide range of commercially available color cards as also any specially designed shades on customer demand. Precision and the ability to create a shade quickly are two very important elements that HELIOS TINTING is definitely able to provide.

## CONTACT

For all additional information about our mixing systems, please visit [www.helios-tinting.com](http://www.helios-tinting.com) or send an e-mail to [tinting.support@kansai-helios.si](mailto:tinting.support@kansai-helios.si).

# BW COLORANTS

## WATER-BASED COLORANTS

(RESIN FREE, APE AND VOC FREE)

BW colorants are used for tinting water-based products for wood and metal coatings.



NAME	COLOUR	METAL COATINGS	WOOD COATINGS	PIGMENTATION (%)	C.I.	WEATHER RESISTANCE	LIGHT RESISTANCE	DENSITY (g/mL)
BW W	white	X	X	70	PW 6	5	8	2,35
BW BKC	black	X	X	15	PBk 7	5	8	1,22
BW BKD	black	X	X	5	PBk 7	5	8	1,27
BW BL	blue	X	X	40	PB 15:2	5	8	1,22
BW GR	green	X	X	40	PG 7	5	8	1,35
BW LYO	lemon yellow	X	X	55	PY 138 / PY 184	4-5	7-8	1,77
BW MA	magenta	X	X	15	PR 122	4	7-8	1,33
BW ORO	orange	X	X	38	PO 73	4-5	8	1,09
BW OYO	orange-yellow	X	X	35	PY 139	5	8	1,21
BW RO	red	X	X	40	PR 254	4-5	8	1,23
BW ROX	oxide red	X	X	60	PR 101	5	8	2,08
BW VI	violet	X	X	15	PV 23	4-5	8	1,40
BW YOX	ochre	X	X	55	PY 42	5	8	1,85
BW TIR	transp. iron oxide red		X	37	PY 101	5	8	1,53
BW TIY	transp. iron oxide yellow		X	36	PR 42	5	8	1,44
BW TRO	transp. red		X	35	PR 168	5	8	1,35
BW LOO	light orange	X		38	PO 36	4-5	8	1,20
BW PRO	bordeaux	X		15	PV 19	4-5	8	1,31
BW ADD	transparent	X		60	/	/	/	1,89

\* light resistance is measured on an 8-level blue scale; 1 – poor light resistance; 8 – excellent light resistance

\*\* weather resistance is measured on a 5-level grey scale; 1 – poor weather resistance; 5 – excellent weather resistance



**KANSAI HELIOS Slovenija d.o.o.**  
Količevo 65, 1230 Domžale, Slovenia

Part of KANSAI PAINT

More information on the general conditions is available on [www.helios-tinting.com](http://www.helios-tinting.com).